





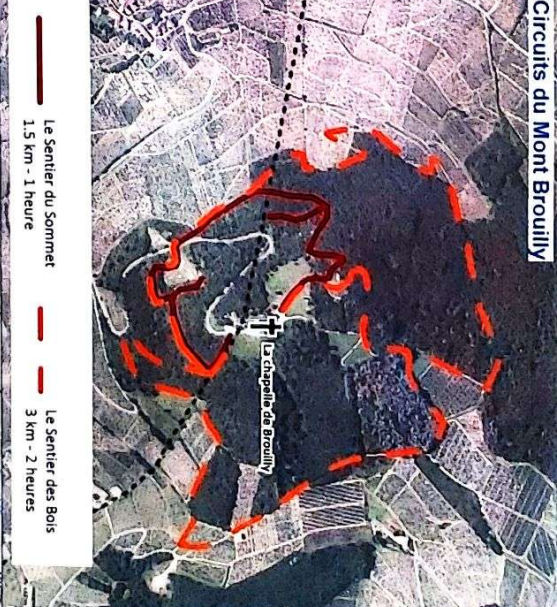
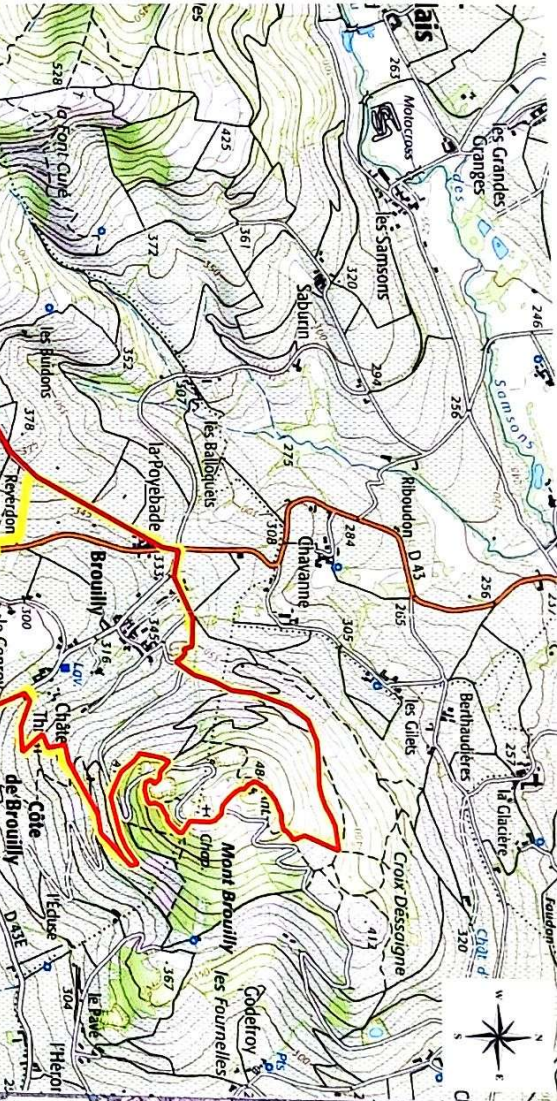
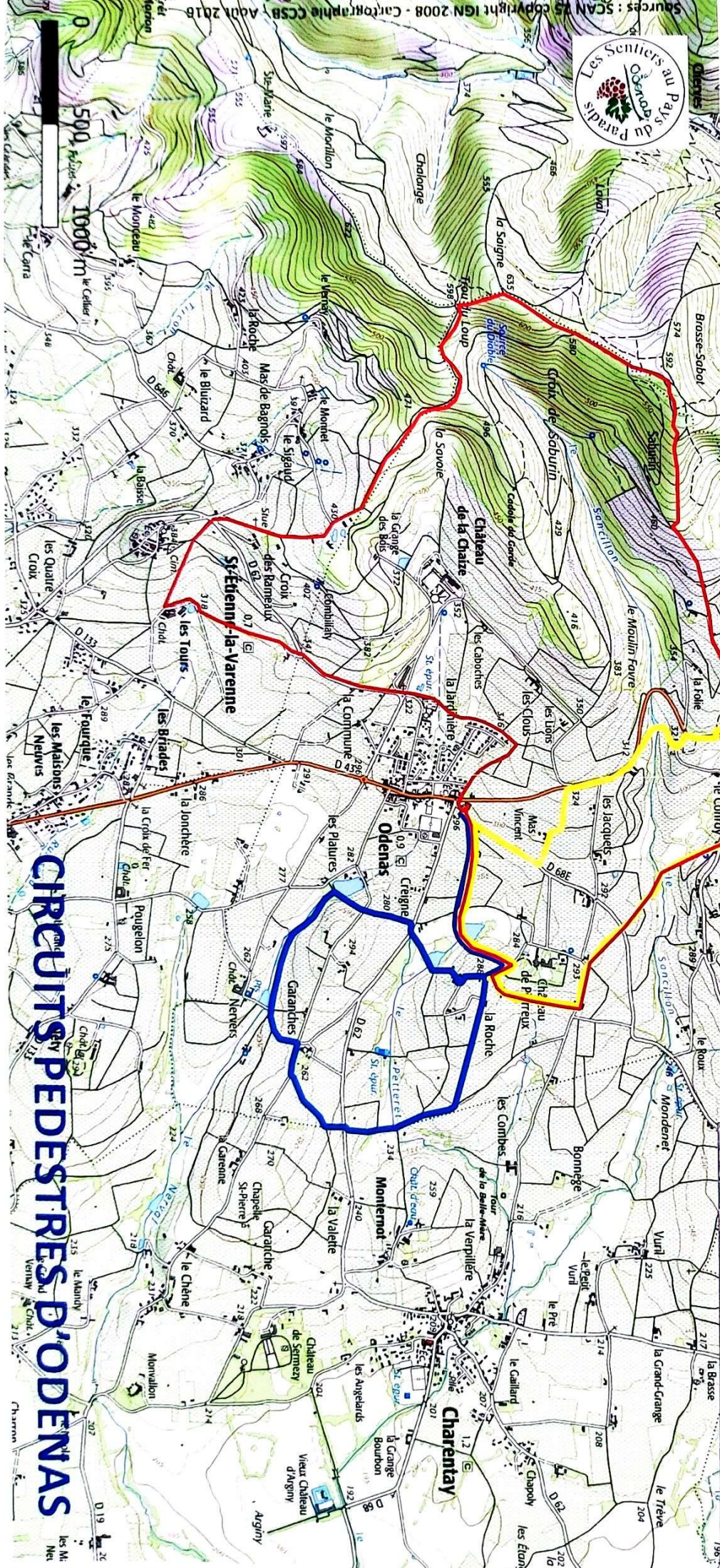


Légende :

Tous les circuits s'effectuent dans les deux sens.

-  Circuit bleu "Les Etangs" 6 km - 2 heures
-  Circuit jaune "Brouilly" 9 km - 3 heures
-  Circuit rouge "Les Cimes" 15 km - 5 heures
-  Départ de la Mairie
-  Tables de pique-nique
-  Limite communale



-  Le sentier du Sommet 1,5 km - 1 heure
-  Le sentier des Bois 3 km - 2 heures

CIRCUITS PEDESTRES D'ODENAS